



**Te Awa Tupua Whanganui River Race**  
**Saturday 25 July 2026**  
**Te Ao Hou Marae, Whanganui**  
**356a Somme Parade, Aramoho, Whanganui**

**Tai Awa Waka Ama**  
**Pānui 1**

*Pari ana te tai, timu ana te tai, he tohu nō ngā Atua kia hikina te hoe!  
Tēnei te Awa Tupua o Whanganui e karanga ana, kia piri mai te marea ki tōna manawa ora.  
Kia pā mai hoki o mata ki te ātaahua o tōna taiao.  
Kauaka e kōrero mō te awa, kōrero ki te awa. Te tūpuna, te mātāpuna o te ora e tatari mai  
ana.  
Nau mai, haere mai!*

**EVENT SUMMARY**

Tai Awa Waka Ama welcomes you to our first **Te Awa Tupua – Whanganui River Race**, to be held at **Te Ao Hou Marae, Whanganui**, on **25 July 2026**. This special event marks the one-year anniversary of Tai Awa Waka Ama and celebrates our journey as a club.

Founded to create opportunities for our hāpori to connect through waka ama, our kaupapa is grounded in **kotahitanga, whanaungatanga, whai oranga, and tiakitanga**.

Our **W1 singles race** provides paddlers with a chance to challenge themselves individually, sharpen their skills, and build toward the **Long Distance Nationals at Orewa Beach in October**.

Hosted on the banks of our awa, this event is also an opportunity to welcome paddlers onto our rohe and share the beauty and mana of **Te Awa Tupua**.

We warmly welcome paddlers and their whānau from across the motu to join us for a day of racing, connection, and celebration.

**EVENT SCHEDULE**

7.00am	Registration, waka drop off & safety checks
8.15am	Karakia
8.30am	Race & Safety briefings
9.00am	Racing Begins
2.00pm	Prizegiving
2.30pm	Closing Karakia



## RACE SCHEDULE

Time	Race
8.30am	Race Briefing - all races
9.00am	Race Start - W1 6km
10.00am	Race Start - W1 10km
11.30am	Race Start – W1 16km

## RACE DAY INFORMATION

**Car Parking:** Parking is available on the street (Anzac Parade). You can drive down to offload waka and then take your car back on the street for parking.

**Food:** We encourage you to bring your own healthy kai, however we will have hot soup and buns available in the wharekai and a small range of food vendors will be available onsite to purchase kai.

**Toilets:** A portaloos will be available to the left of the slipway, and toilets/showers are also available at the Marae.

**First Aid:** First Aid will be available at the registration tent.

**Rubbish/Recycling:** We encourage you to please take what you bring. However, the main rubbish and recycling station will be located by the vendors.

**Alcohol/Smokefree:** Alcohol, smoking, vaping and any other substance use is not permitted at this event, including all premises of the event.

## WAKA DROP OFF & SAFETY CHECKS

### Waka Drop off:

- Waka drop off will be available 7.00am on event day
- Waka drop off will be to the left of the slipway by the wash station.
- You can drive down to unload your waka and then take your vehicle back up to park.

### Safety Checks:

- All waka will have to pass a safety check and be marked before racing. Any boats not marked will not be permitted to race.
  - Spare Paddle
  - Bailer
  - Life Jacket
  - Flare or Communication Device.



## Wash Station Details - **BIOSECURITY**

CLEAN, CHECK, DRY Protocols

- As tangata tiaki of our Awa we are letting you know the importance of following the Clean Check Dry steps to ensure we do not spread the invasive clam or any other species in our awa and lakes around the motu.
- There will be a wash station set up and all waka and paddles **MUST** be washed down before you race. This will be part of the safety checking process.
- Following your race you must again wash down your waka, life jacket and paddle.
- We will have kaimahi to support you to get this done.

## RACE RULES

All entrants must be familiar with the Waka Ama Aotearoa New Zealand race and safety rules. Refer to the following link for more information:

<https://www.wakaama.co.nz/pages/read/1005147>

## AGE DIVISIONS & RACE EVENTS

All age divisions are based on the Waka Ama Aotearoa NZ Race Rules:

<https://www.wakaama.co.nz/pages/read/1005147>

**Exceptions to the divisions are as follows;**

6km race a minimum age of 13 years.

10km & 16km races have a minimum age of 16 years.

WAKA	DISTANCE	DIVISIONS	GENDER
W1	6km	J16, J19 & Novice	Men & Women
W1	10km	Open (non-competitive), Golden Master, 70+ & Adaptive	Men & Women
W1	16km	Open, Masters and Senior Masters	Men & Women

**Novice definition:** *Paddling for one year or less and or has not competed in more than 3 regattas (Including Sprints).*

## FEES

PER PERSON BY EVENT <i>(charged for each event entered)</i>	
Event	Cost
W1 – 6km	\$20.00
W1 - 10km	\$30.00
W1 – 16km	\$30.00



## ONLINE ENTRIES & PAYMENT

- Online entries are to be completed using the Waka Ama Aotearoa NZ online entry system.
- All entries to be completed through your club admin – contact your club admin to process your entry
- No entries on the day, no exceptions.
- Entries close on **Tuesday 21st July 2026**
- Rosters close on **Wednesday 22 July 2026.**
- Once entered, payment can be made online to:  
**Tai Awa Waka Ama Manatōpu**  
**02 0727 0308479 000**
  - Use your club and last name as reference.

## SAFETY REQUIREMENTS

- All waka must be Safety Checked.
- All J16s, J19 and novice must wear a life jackets.
- All paddlers must have the following:
  - PFD - Personal Floatation Device (per person)
  - Bailers
  - Flare or cellphone in waterproof case
  - Spare Paddle

## INDIVIDUAL WAIVERS

- Individual waivers must be completed by all paddlers.
- All paddlers U18 must have their waiver signed by their parent/guardian.
- Waivers can be sent to ***taiawa.wakaama@gmail.com*** or handed in to registration on race day.
- Individual waivers can be found on our event page on the Waka Ama Aotearoa NZ website.

## LIVESTREAMING, VIDEOGRAPHY & PHOTOGRAPHY

- This race will be livestreamed by our iwi radio station Awa FM.
- We will also have professional videographers and photographers capturing this event and we will share these on our website and social media platforms.
- By entering this race you agree to be in our race livestream, and any videography or photography captured.

## ACCOMMODATION - TE AO HOU MARAE

- We have accommodation available for those travelling from out of town on Friday night.
- **Address:** Te Ao Hou Marae, 356a Somme Parade, Aramoho, Whanganui.
- Cost will be \$40.00 per person, tamariki under 10 free.
- **Powhiri will be at 4.30pm on Friday.**

## CONTACT INFORMATION

- All enquiries please email: [taiawa.wakaama@gmail.com](mailto:taiawa.wakaama@gmail.com)
- All urgent matters please call: **Lauren Tamehana 027 283 9089**

## COURSE MAPS

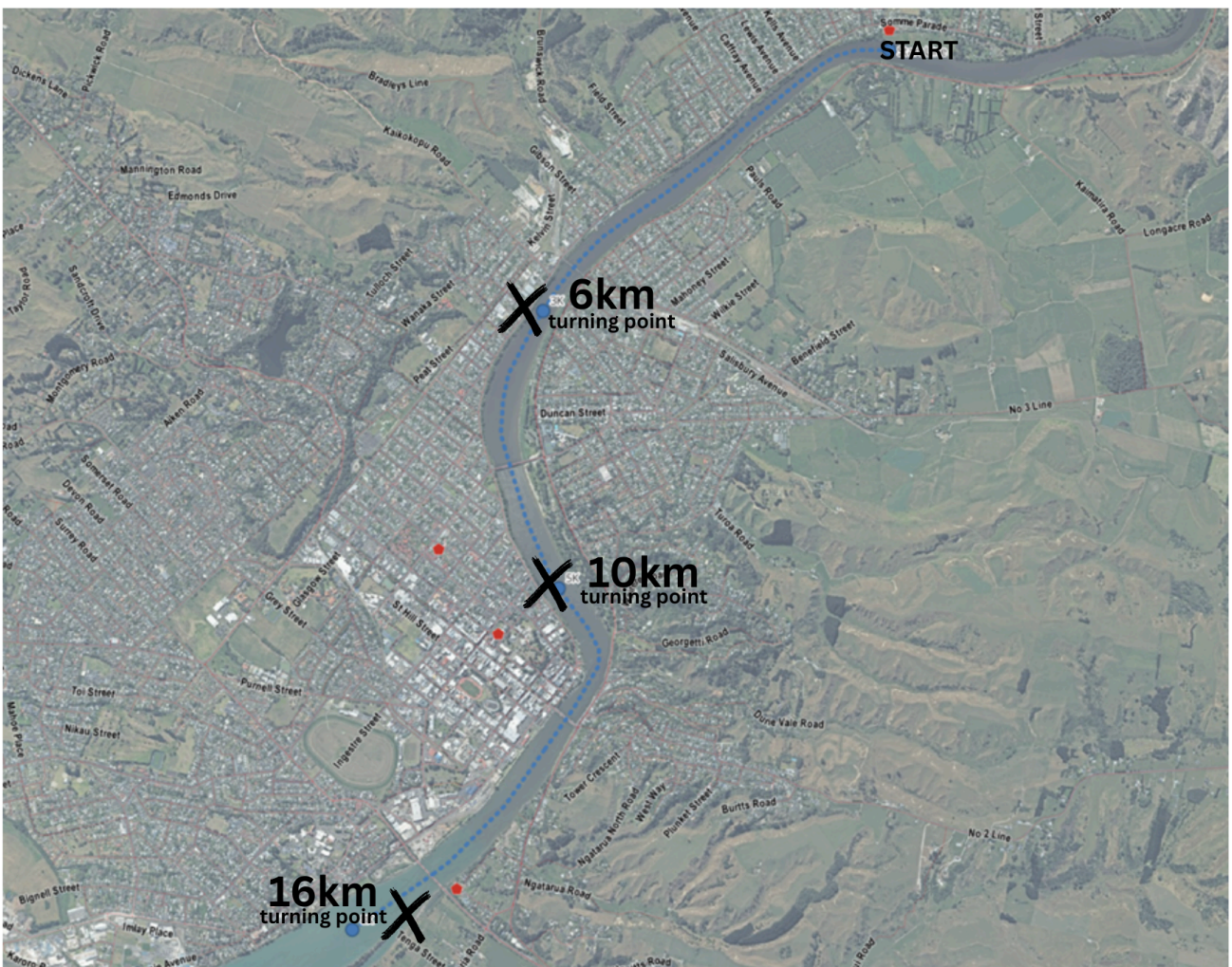
### Map 1: Main racecourse



Walkway and viewing from Upokongao Bridge for the 10 & 16km races.

Approximately 1km up the road from the Marae is the Top Ten campground – from here you can walk to the Upokongaro Bridge. There won't be clear views of the Awa all along the way but a spectacular view from the bridge. Alternatively, you could drive to the bridge – limited parking or drive on the other side of the Awa and park at Upokongaro village and walk to the bridge.

### Map 2: Alternative Racecourse



## Venue Map

